

Technical specification sheet

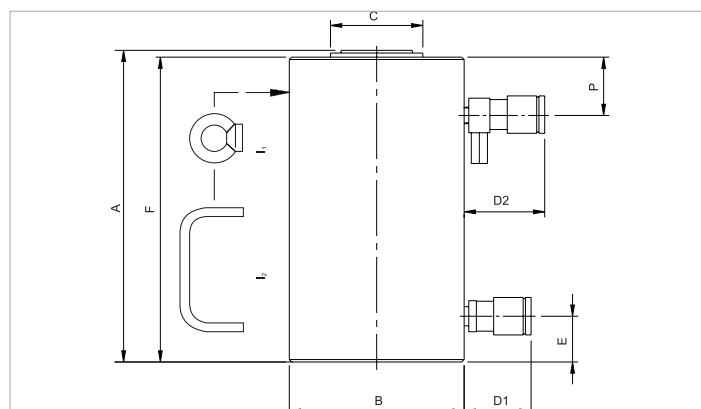
HJ 100 H 5 | Cylinder

Specifications		
article number		100.122.009
short description		Cylinder
model		HJ 100 H 5
max. working pressure	bar/Mpa	720 / 72
tonnage	t	100
stroke	mm	50
closed height	mm	170
capacity	kN/t	1029.3 / 105
effective pressure area (press)	cm ²	143
effective pressure area (retract)	cm ²	56.6
required oil content (effective)	cc	433
required oil content (press)	cc	716
required oil content (retract)	cc	283
connection		A 118
cylinder type		high tonnage
acting type		double
return type		hydraulic
material		steel
weight, ready for use	kg	29.0

Technical drawing dimensions		
dimension A	mm	163
dimension B	mm	178
dimension C	mm	105
dimension D1	mm	70
dimension D2	mm	85
dimension E	mm	27
dimension F	mm	163
dimension P	mm	52
I type		[I1]

Standard supplied with	
• High Flow female coupler A 118 on inlet port	
• High Flow female coupler with pressure relief valve A 418 on outlet port	
• Flat saddle	

Accessories	
Tilting Saddle HJ 100 - 150 (SN)	100.181.044



holmatro.com

© Holmatro 2025-10-24

While the greatest care has been devoted to the content, it is possible that the information in this printed matter is incorrect or incomplete. Holmatro B.V. and its affiliated companies (hereafter: Holmatro) cannot be held liable in any way for the consequences of activities undertaken on the basis of this printed matter. Values can vary within the manufacturer measurements. If you have any doubts about the correctness or completeness of the information, you shall contact Holmatro (T +31 (0)162-751480). Nothing from this printed matter can be copied and/or made public in any way without the explicit authorisation of Holmatro.