

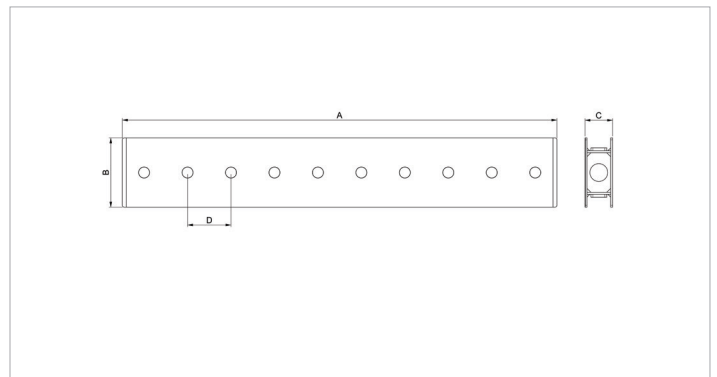
## Technical specification sheet

# B 30 - 1100 | Beam Rerailing

Specifications		
article number		100.002.916
model		B 30 - 1100
short description		Beam Rerailing
weight, ready for use	lb	72.1

Technical drawing dimensions		
dimension A	in	43.3
dimension B	in	13.8
dimension C	in	5.5
dimension D	in	8.7

- Standard supplied with**
- Optimally placed grips; easy to carry, by just 1 or 2 persons.



[holmatro.com](http://holmatro.com)

© Holmatro 2025-10-02

While the greatest care has been devoted to the content, it is possible that the information in this printed matter is incorrect or incomplete. Holmatro B.V. and its affiliated companies (hereafter: Holmatro) cannot be held liable in any way for the consequences of activities undertaken on the basis of this printed matter. Values can vary within the manufacturer measurements. If you have any doubts about the correctness or completeness of the information, you shall contact Holmatro (T +31 (0)162-751480). Nothing from this printed matter can be copied and/or made public in any way without the explicit authorisation of Holmatro.